

Electricity Usage Monitor Guide

Borrowing a Monitor

Use the monitor to measure products in your home that do not exceed 120 volts and 15 amps. You can borrow the monitor for up to four weeks. If you need more time, simply contact us to request an extension. We also encourage you to complete the worksheet and return it with the monitor so we can review your results and provide helpful recommendations.

Please return the enclosed monitor by: _____

Returning the Monitor

Please follow these steps for returning the monitor:

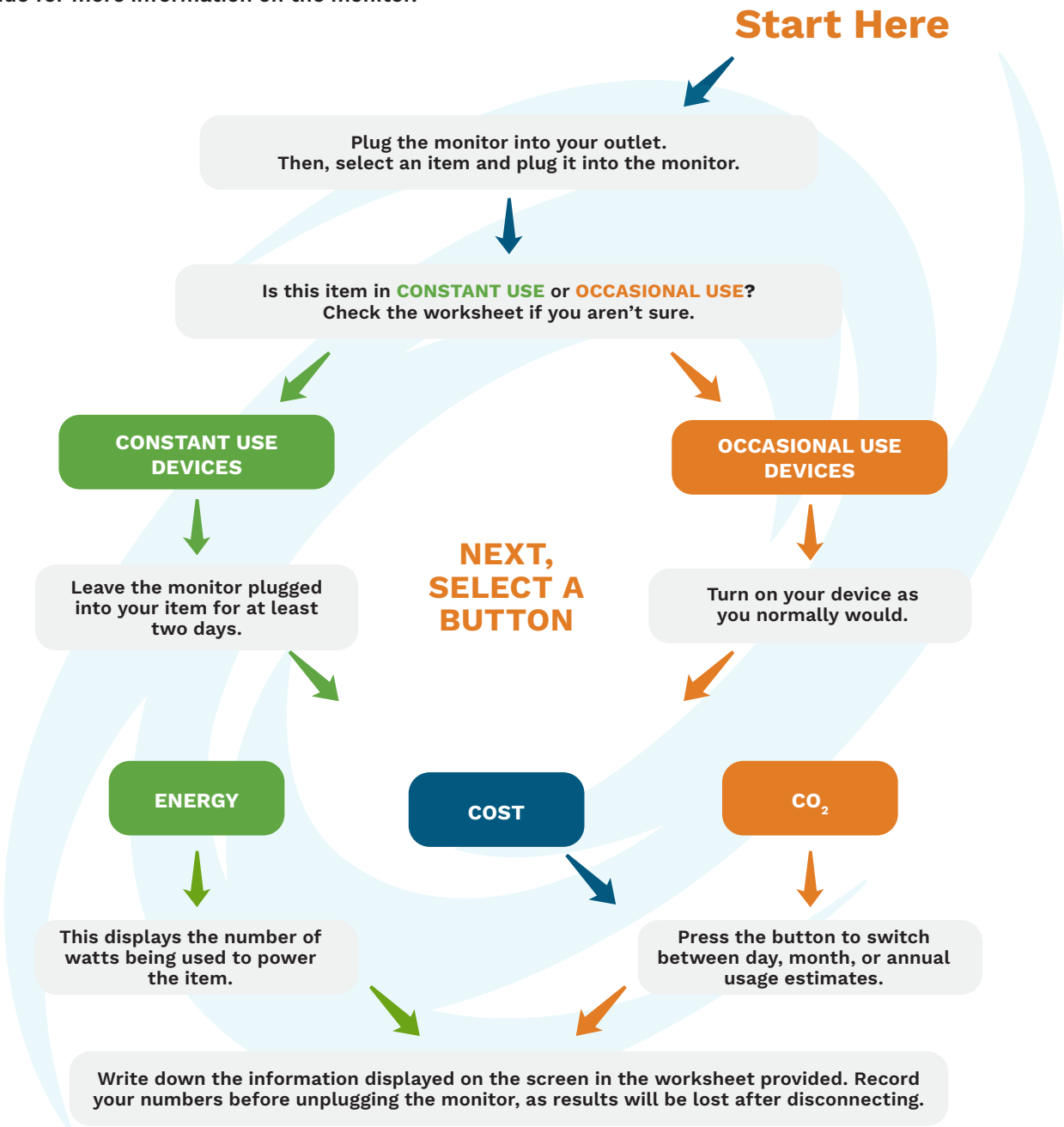
1. Place the monitor in the box it came in.
2. Place a copy of the completed worksheet into the box.
3. Secure the prepaid return label enclosed with the monitor onto the front of the box.
4. Seal the box with shipping tape.
5. Drop the box in the mail.

A customer support specialist will follow up with you once we have received the monitor. If you need additional assistance, please call Efficiency Smart at 877-889-3777.

****Efficiency Smart does not warrant that participation in this service will result in energy savings or benefits of any kind. Accuracy of measurements and of borrower's analysis cannot be guaranteed. Participants assume all responsibility for use of the enclosed monitor; Efficiency Smart and its employees disclaim any and all liability for any injury and/or damages resulting from any such use.***

Electricity Usage Monitor Instructions

Please follow the flow chart below for instructions on using the monitor. You can also refer to the Tricklestar usage guide for more information on the monitor.



REPEAT THE STEPS ABOVE WITH ADDITIONAL ITEMS